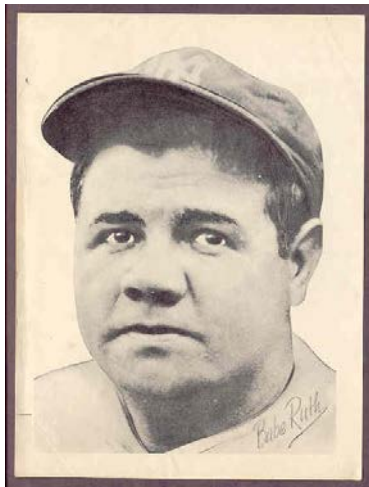


KIT YOUNG IS COMING TO THE MIDWEST



Hello,

Hobby pioneer Kit Young is coming to the Midwest on a buying trip July 21-August 5, 2015. Following are cities we plan to visit (exact schedule to be determined):

July 21-August 5

- | | |
|--|-------------------------------|
| 1) Minneapolis/St. Paul/Northfield, MN | 5) Des Moines/Quad Cities, IA |
| 2) Chicago/Peoria, IL | 6) Fargo, ND |
| 3) Milwaukee/Madison/Green Bay, WI | 7) Sioux Falls, SD |
| 4) Omaha/Lincoln, NE | 8) Indianapolis, IN |

(Plus towns between and near these cities).

WE ARE BIG BUYERS OF THE FOLLOWING:

- 1. Complete Collections** – Pre-1970 sets, star cards, partial sets, regional issues, & pre-war cards, etc.
- 2. Star Cards** – all grades 1970 & older.
- 3. Graded Cards** – we pay about 50-60% of SMR for cards graded 4-5-6-7-8 by PSA, SGC and BVG including Mickey Mantle, Ted Williams, Jackie Robinson, Willie Mays, Roger Maris, Yogi Berra, Pete Rose, Roberto Clemente, Ernie Banks, Stan Musial, Bob Feller, Pee Wee Reese, Phil Rizzuto, Roy Campanella, Whitey Ford and more.
- 4. 1950's Cards** – we buy complete and partial sets of Topps and Bowman
- 5. Pre-War Cards** – we buy vintage stars such as Babe Ruth, Ty Cobb, Lou Gehrig, Joe DiMaggio, Jimmy Foxx, Cy Young, Christy Mathewson, Walter Johnson, Mel Ott, Nap Lajoie, Pie Traynor, Dizzy Dean, Carl Hubbell, etc. – plus we buy accumulations and partial sets of tobacco cards, Goudeys, Play Balls, Diamond Stars, 1948-49 Leaf and more.

You may call us now if you would like to meet Kit and sell your cards or if you want to discuss your collection. We have ample funds to buy almost any collection (we typically spend \$250,000-\$500,000 on such trips but can handle much larger collections). As always, all transactions are confidential and subject to your approval. We can also purchase collections through the mail.

Please call our office toll-free: **(888) 548-9686 and ask for Scott.** Thanks, Kit

KIT YOUNG'S BUYING LIST

WE ARE BUYING THESE SETS (IN PERSON OR THROUGH THE MAIL)

WE ARE BUYING THESE SETS (IN PERSON OR THROUGH THE MAIL)

BASEBALL	EX-MT/NR-MT	VG-EX/EX	1965 Topps	2200	1100	1955 Bowman	800	400
1948 Bowman	\$2600	\$1300	1966 Topps	1800	900	1950 Topps Felt	3700	1800
1949 Bowman	6500	3100	1967 Topps	2400	1200	1951 Topps Magic	550	225
1950 Bowman	3600	1800	1968 Topps	1250	650	1955 Topps	1900	850
1951 Bowman	8300	4100	1969 Topps	1200	600	1956 Topps	900	425
1952 Bowman	3200	1600	1970 Topps	900	450	1957 Topps	1100	550
1953 Bowman Color	6300	3100	1971 Topps	1000	450	1958 Topps	625	300
1953 Bowman B&W	1250	600	1972 Topps	750	450	1959 Topps	450	225
1954 Bowman	1700	850	1973 Topps	325	160	1960 Topps	300	150
1955 Bowman	2100	800	1974 Topps	150	70	1961 Topps	500	250
1951 Topps Blue	850	400	1975 Topps	270	115	1962 Topps	1000	450
1951 Topps Red	400	200	1976 Topps	80	-	1962 Topps Bucks	175	85
1952 Topps	32000	16000	1977 Topps	80	-	1963 Topps	700	350
1953 Topps	6300	3150	<div style="border: 1px solid black; padding: 5px; text-align: center;"> <p><i>We also buy complete and partial sets of Play Balls, Goudeys, Tobacco Cards, Diamond Stars, Red Mans, Red Hearts, Leaf, 1959-1963 Fleer and other pre-1970 sets.</i></p> </div>			1964 Topps	750	375
1954 Topps	3400	1700				1965 Topps	2000	900
1955 Topps	3400	1700				1966 Topps	750	375
1955 Topps Dbl Hdr	2000	1000				1967 Topps	350	175
1956 Topps	3400	1700				1968 Topps	275	135
1957 Topps	4300	2100				1968 Topps Teams	1000	450
1958 Topps	2400	1200				1969 Topps	225	110
1959 Topps	3300	1650				1970 Topps	175	90
1960 Topps	2100	1100				1971 Topps	175	90
1961 Topps	3000	1600				1972 Topps	1200	600
1962 Topps	3200	1600	1973 Topps	160	75			
1963 Topps	2800	1450	1974 Topps	100	50			
1964 Topps	1500	750	1975 Topps	100	50			
1964 Topps Stand Up	2000	1000	1976 Topps	125	60			
			1960 Fleer	350	175			
			1961 Fleer	800	375			
			1962 Fleer	450	225			
			1963 Fleer	900	450			
			1964 Philadelphia	450	225			
			1965 Philadelphia	400	200			
			1966 Philadelphia	450	225			
			1967 Philadelphia	325	170			

We also buy complete and partial sets of Play Balls, Goudeys, Tobacco Cards, Diamond Stars, Red Mans, Red Hearts, Leaf, 1959-1963 Fleer and other pre-1970 sets.

FOOTBALL	EX-MT/NR-MT	VG-EX/EX
1935 National Chicle	\$7500	\$3700
1948 Leaf	3000	1400
1949 Leaf	1100	475
1948 Bowman	3100	1500
1950 Bowman	2000	950
1951 Bowman	1750	850
1952 Bowman Large	6300	3100
1952 Bowman Small	2500	1250
1953 Bowman	1700	800
1954 Bowman	900	425

WE WILL BUY THE FOLLOWING



- 1) Complete Collections - Sets, Star Cards, partial sets, regional issues, prewar cards, oddball items, memorabilia, accumulations of all kinds.
- 2) Star Cards - Stars from the 1940's, 50's, 60's & 70's, Graded cards; plus rookie cards and pre 1950's Hall of Famers.
- 3) Other Memorabilia: Includes autographed cards and balls, trophies, awards, old baseball collectibles, etc.

Please Note: Unlike most dealers, we will buy cards in all grades (EX-MT, EX, VG-EX, etc.) as well as NR-MT/MT - We buy it all!



WE WILL BUY THE FOLLOWING

- 1) Complete Collections - Sets, Star Cards, partial sets, regional issues, prewar cards, oddball items, memorabilia, accumulations of all kinds.
- 2) Star Cards - Stars from the 1940's, 50's, 60's & 70's, graded cards; plus rookie cards and pre 1950's Hall of Famers
- 3) Other Memorabilia: Includes autographed cards and balls, trophies, awards, old baseball collectibles, etc.

Please Note: Unlike most dealers, we will buy cards in all grades (EX-MT, VG-EX, etc.) as well as NR-MT/MT - We buy it all!

HOW TO SELL BY MAIL

We buy almost all star cards and sets from the 1950's, 1960's and 1970's (up to 1975), plus pre-war cards, regular issues, inserts, oddball sets and older memorabilia. You may:

- 1) Call or write to let us know what you have and we'll let you know what we can pay.
- 2) Send your star cards, sets, pre-war cards, etc. to us. We'll call you back with our "Buy Price".

KIT YOUNG CARDS

4876 Santa Monica Ave. #137

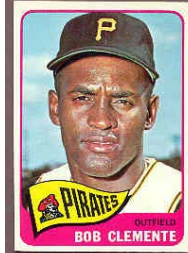
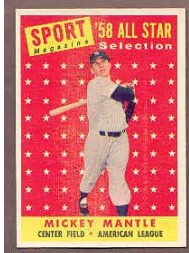
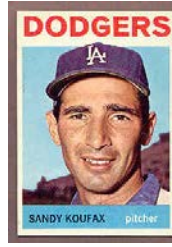
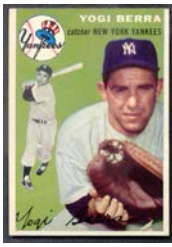
San Diego, CA 92107

PH. (858) 259-1300 • fax (858) 259-1675

Visit us at www.kityoung.com



BUYING STAR CARDS



MANTLE	EX-MT/NR-MT	VG-EX/EX
1951 Bowman	Call	Call
1952 Bowman	\$900	\$450
1953 Bowman	800	400
1953 Bowman #44	320	160
1954 Bowman	600	300
1955 Bowman	300	150
1952 Topps	Call	Call
1953 Topps	1100	500
1956 Topps	600	300
1957 Topps	500	275
1957 Topps #407	200	100
1958 Topps	400	200
1958 Topps #487	80	40
1958 Topps #418	160	80
1959 Topps	400	200
1959 Topps AS	120	60
1959 Topps #461	60	35
1960 Topps	240	120
1960 Topps AS	120	50
1961 Topps	240	120
1961 Topps #406	40	20
1961 Topps #475	80	40
1961 Topps AS	225	120
1962 Topps	240	120
1962 Topps #18	80	40
1962 Topps AS	80	40
1963 Topps	240	120
1964 Topps	200	100
1964 Topps #331	65	35
1965 Topps	240	120
1966 Topps	140	70
1967 Topps	140	70
1968 Topps	140	70
1968 Topps #490	60	35
1969 Topps	140	60

AARON	EX-MT/NR-MT	VG-EX/EX
1954 Topps	\$750	\$350
1955 Topps	160	80
1956 Topps	150	80
1957 Topps	130	60
1958 Topps	80	40
1959 Topps	60	30
1959 Topps AS	50	25
1960 Topps	50	25
1960 Topps AS	40	20
1961 Topps	50	25
1961 Topps AS	60	30
1962 Topps	60	30
1963 Topps	80	40
1963 Topps #242	25	12
1964 Topps	40	20
1965 Topps	60	30
1966 Topps	50	25
1967 Topps	35	17
1968 Topps	24	12
1969 Topps	20	10
1970 Topps	20	10
1971 Topps	22	12
1972 Topps	13	-
1973 Topps	13	-

JACKIE ROBINSON	EX-MT/NR-MT	VG-EX/EX
1948-49 Leaf	\$850	\$425
1949 Bowman	700	350
1950 Bowman	500	250
1952 Topps	900	400
1953 Topps	300	150
1954 Topps	180	90
1955 Topps	200	100
1956 Topps	120	60

TED WILLIAMS	EX-MT/NR-MT	VG-EX/EX
1939 Play Ball	\$850	\$400
1940 Play Ball	550	275
1941 Play Ball	700	350
1941 Double Play	325	150
1948-49 Leaf	525	250
1950 Bowman	450	225
1951 Bowman	350	175
1954 Bowman	1300	600
1954 Topps #1	375	125
1954 Topps #250	300	125
1955 Topps	300	160
1956 Topps	225	100
1957 Topps	250	100
1958 Topps	240	100
1958 Topps #321	45	22
1958 Topps AS	65	32

KOUFAX	EX-MT/NR-MT	VG-EX/EX
1955 Topps	\$500	\$250
1956 Topps	150	75
1957 Topps	150	75
1958 Topps	100	50
1959 Topps	60	30
1960 Topps	50	25
1961 Topps	45	20
1962 Topps	55	27
1963 Topps	60	30
1964 Topps	50	25
1965 Topps	50	25
1966 Topps	40	20

BERRA	EX-MT/NR-MT	VG-EX/EX
1948 Bowman	\$350	\$175
1949 Bowman	140	70
1950 Bowman	160	80
1951 Bowman	160	80
1952 Bowman	225	100
1953 Bowman	300	150
1954 Bowman	75	37
1955 Bowman	50	25
1951 Topps RB	50	25
1952 Topps	300	150
1953 Topps	150	80
1954 Topps	125	60
1955 Topps	130	70
1956 Topps	80	40
1957 Topps	80	40
1958 Topps	45	25
1959 Topps	35	18
1960 Topps	35	17
1961 Topps	35	17
1962 Topps	35	17
1963 Topps	42	20
1964 Topps	17	9
1965 Topps	22	11

MARIS	EX-MT/NR-MT	VG-EX/EX
1958 Topps	\$200	\$100
1959 Topps	50	25
1960 Topps	40	20
1960 Topps AS	40	20
1961 Topps	100	40
1961 Topps #478	24	14
1961 Topps AS	80	40
1962 Topps	150	40
1962 Topps #313	32	17
1962 Topps #401	24	12
1963 Topps	32	16
1964 Topps	25	14
1965 Topps	27	16
1966 Topps	21	10
1967 Topps	22	12
1968 Topps	22	12

CLEMENTE	EX-MT/NR-MT	VG-EX/EX
1955 Topps	\$900	\$400
1956 Topps	170	80
1957 Topps	125	60
1958 Topps	125	60
1959 Topps	70	35
1959 Topps #543	50	25
1960 Topps	85	40
1961 Topps	50	24
1962 Topps	80	35
1963 Topps	105	50
1964 Topps	85	40
1965 Topps	70	30
1966 Topps	60	28
1967 Topps	50	22
1968 Topps	34	15
1968 Topps AS	11	5
1968 Topps #480	35	16
1969 Topps	25	13
1970 Topps	25	13
1971 Topps	55	28
1972 Topps	20	10
1973 Topps	17	7

PETE ROSE	EX-MT/NR-MT	VG-EX/EX
1963 Topps	\$475	\$250
1964 Topps	100	50
1965 Topps	90	45
1966 Topps	40	20
1967 Topps	40	20
1968 Topps	25	13
1969 Topps	22	10
1970 Topps	25	12
1971 Topps	30	12
1972 Topps	23	10
1972 Topps #560	11	5
1973 Topps	10	4
1974 Topps	8	4
1975 Topps	8	4

BANKS	EX-MT/NR-MT	VG-EX/EX
1955 Bowman	\$140	\$70
1954 Topps	600	300
1955 Topps	80	40
1956 Topps	40	22
1957 Topps	50	25
1958 Topps	40	22
1959 Topps	32	16
1959 Topps AS	25	12
1960 Topps	20	10
1960 Topps AS	25	12
1961 Topps	15	7
1961 Topps AS	32	16
1962 Topps	20	10
1963 Topps	40	20
1964 Topps	16	8
1965 Topps	32	16
1966 Topps	12	6
1967 Topps	8	4
1968 Topps	10	5
1969 Topps	7	4
1970 Topps	16	8

1971 Topps 14 7

MAYS	EX-MT/NR-MT	VG-EX/EX
1951 Bowman	Call	Call
1952 Bowman	Call	Call
1954 Bowman	\$160	\$80
1952 Topps	Call	Call
1953 Topps	Call	Call
1954 Topps	320	125
1955 Topps	240	115
1956 Topps	120	50
1957 Topps	140	60
1958 Topps	120	45
1958 Topps #436	40	20
1959 Topps	60	30
1959 Topps AS	40	18
1960 Topps	40	18
1961 Topps	40	20
1961 Topps AS	50	20
1961 Topps #482	20	10
1962 Topps	80	36
1963 Topps	60	25
1963 Topps #138	32	14
1964 Topps	40	20
1965 Topps	55	22
1966 Topps	80	30
1967 Topps	40	20
1968 Topps	20	9
1969 Topps	30	14
1970 Topps	30	13
1971 Topps	40	15
1972 Topps	12	6
1973 Topps	12	6

MUSIAL	EX-MT/NR-MT	VG-EX/EX
1948-49 Leaf	\$400	\$175
1948 Bowman	325	150
1949 Bowman	250	125
1952 Bowman	200	100
1958 Topps AS	16	8
1959 Topps	50	20
1960 Topps	40	18
1961 Topps	40	18
1962 Topps	40	17
1963 Topps	40	20

We are also buying cards of players such as: Hank Aaron, Ernie Banks, Yogi Berra, Roy Campanella, Roberto Clemente, Bob Feller, Whitey Ford, Bob Gibson, Sandy Koufax, Mickey Mantle, Roger Maris, Willie Mays, Stan Musial, Jackie Robinson, Pete Rose, Nolan Ryan, Ted Williams and more. Please call our Toll Free #888-548-9686 to discuss what you have for sale.

RUTH, COBB, GEHRIG, WAGNER

We are looking to purchase vintage cards and memorabilia of the following players: Ty Cobb, Joe DiMaggio, Jimmie Foxx, Lou Gehrig, Shoeless Joe Jackson, Walter Johnson, Nap Lajoie, Christy Mathewson, Tris Speaker, Rogers Hornsby, Babe Ruth, Honus Wagner, Cy Young and many others. Please call to discuss what you have for sale.

